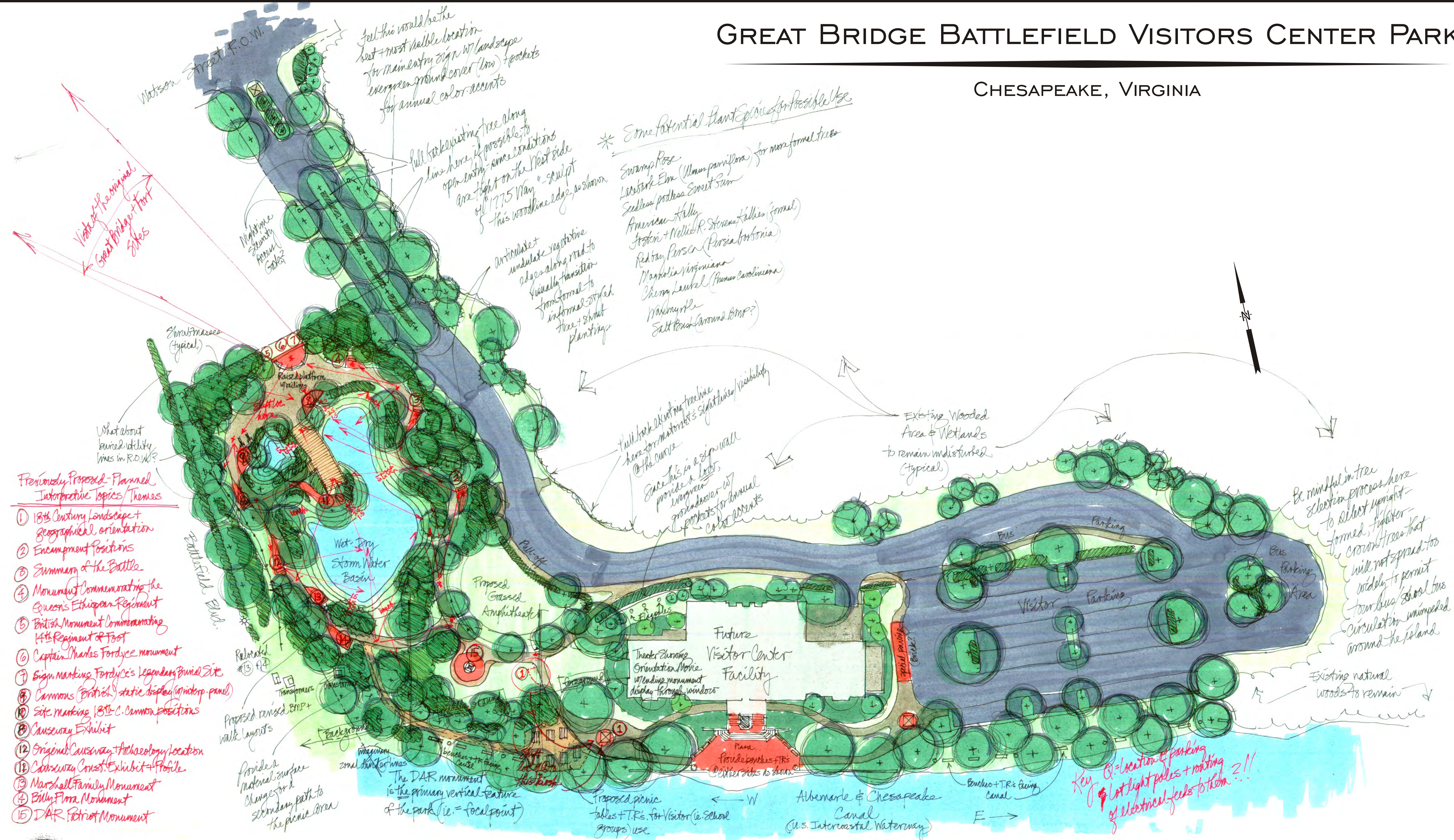


# GREAT BRIDGE BATTLEFIELD VISITORS CENTER PARK

CHESAPEAKE, VIRGINIA



Previously Proposed - Planned Interpretive Topics / Themes

- ① 18th Century Landscape + Geographical orientation
- ② Encampment Positions
- ③ Summary of the Battle
- ④ Monument Commemorating the Queen's Ethiopian Regiment
- ⑤ British Monument Commemorating 14th Regiment of Foot
- ⑥ Captain Charles Fordyce monument
- ⑦ Sign marking Fordyce's legendary Burial Site
- ⑧ Cannon (British) static display (in Victor panel)
- ⑨ Site Marking 18th C. Cannon positions
- ⑩ Causeway Exhibit
- ⑪ Original Causeway Archaeology / location
- ⑫ Causeway Const. Exhibit - 4th file
- ⑬ Marshall Family Monument
- ⑭ Billy Flora Monument
- ⑮ DAR Patriot Monument

Feel this would be the best + most viable location for main entry sign w/ landscape evergreen ground cover (low) + pockets for annual color accents

Full backresting tree along line here, if possible, to open entry - same conditions are right on the West side of 1775 Way - sculpt this woodland edge, as shown

\* Some Potential Plant Species for Possible Use

- Swamp Rose
- Lacebark Elm (*Ulmus parviflorus*) for non-formal trees
- Seedling podocarp Sweet Gum
- American Holly
- Arctic + White R. Strawberry (formal)
- Redbay Persimmon (*Persia bitoriana*)
- Magnolia virginiana
- China Laurel (*Prunus caroliniana*)
- Walden Maple
- Salt Bush (ground BMP?)

Articulate undulate vegetative edges along road to visually transition from formal to informal style. Tree + shrub plantings

Full backresting tree here for main entry's sightline / visibility @ the curve

Since this is a sign wall provide a low, evergreen groundcover w/ pockets for annual color accents

Existing Wooded Area & Wetlands to remain undisturbed (typical)

Be mindful in tree selection process here to select upright formed, fan-like crown trees that will not spread too widely to permit tour bus / school bus circulation unimpeded around the island

Existing natural woods to remain

Key: @ = location of parking + lot light poles + routing of electrical feeds to them...!!



CONCEPT 1

**Basnight Landscape Architecture**  
 A DIVISION OF BASNIGHT LAND & LAWN, INC.  
Basnight Landscape Architecture, 1401 Precon Drive, Suite 105, Chesapeake, Virginia 23320  
 Phone: 757.436.9617 Fax: 757.436.0112 Web: www.basnightlandandlawn.com